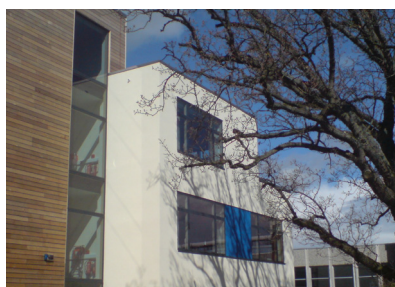


# Animal Welfare and Behaviour Building

## University of Bristol

The University of Bristol Animal Welfare and Behaviour group is a centre of excellence in animal welfare science with a world renowned reputation in its field. The existing facility lacked space which meant Research staff were scattered throughout the campus. A specialist new building was therefore proposed.



<b>Client</b>	University of Bristol
<b>Project Title</b>	Animal Welfare and Behaviour Building
<b>Client Sector</b>	Higher Education
<b>Project Value</b>	£3.9m
<b>Service Provided</b>	Project Management

### Our Role

Provelio had an extensive role in this project, from the initial feasibility study to project completion. A key project framework deliverable was to achieve a BREEAM rating of “Excellent”, Provelio ran the BREEAM process for the client achieving a BREEAM rating of “Excellent” at both design and construction stages. As part of the University’s ongoing commitment to improvement, Provelio’s role extended to undertaking the Post Occupancy Evaluation process on completion. This process involves gaining feedback from the entire project team on elements of team working and project performance against the predictions and aspirations at the project outset.

### Client Benefits

The new building provides excellent new research facilities for the Animal Welfare and Behaviour group; it brings together the various group members and facilitates interaction, identity and cohesion. The increased space available, will allow the group to expand both in terms of their numbers and also in terms of the quality of research. The new building raises Langford’s profile and will help develop the groups international reputation, it provides both a visual and practical statement. It also meets with the ethos of the group by providing sustainability in design, materials and energy usage, innovative ideas were implemented such as reusing waste heat from an adjacent incinerator, a green roof, thermal mass and natural ventilation. To promote energy reduction a screen in the main entrance will project energy usage from the building using smart metering.